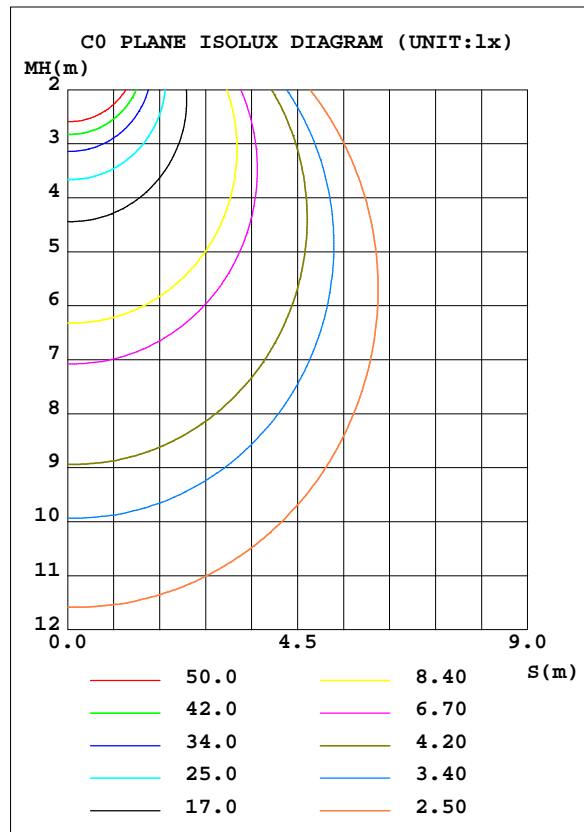
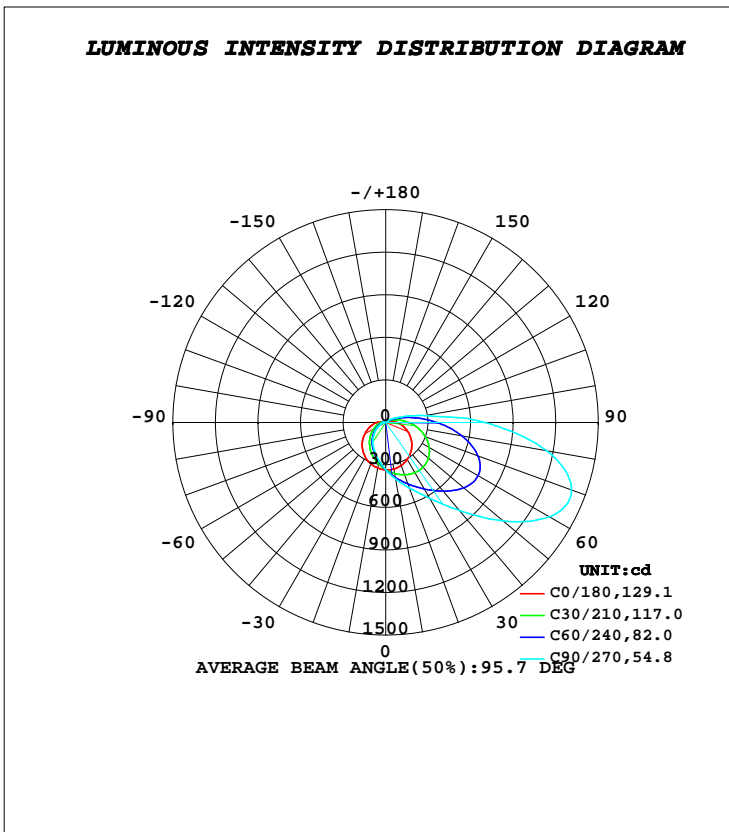


**LUMINAIRE PHOTOMETRIC TEST REPORT**

Test:U:220.80V I:0.0950A P:20.200W PF:0.9620 Freq:50.00Hz Lamp Flux:2229.89x1 lm		
NAME: DW290 20W 000 4000K	TYPE: 圆柱形	
MFR.:	DIM.: $\phi$ 290*94 (mm)	
	SUR.: 260X150 (mm)	

DATA OF LAMP		PHOTOMETRIC DATA Eff: 110.39 lm/W			
MODEL		I <sub>max</sub> (cd)	1406	S/MH(C0/180)	1.35
NOMINAL POWER(W)	20	LOR(%)	100.0	S/MH(C90/270)	3.35
RATED VOLTAGE(V)	220	TOTAL FLUX(lm)	2229.9	$\eta$ UP, DN(C0-180)	9.8,71.0
NOMINAL FLUX(lm)	2229.89	CIE CLASS	SEMI-D.	$\eta$ UP, DN(C180-360)	2.3,17.0
LAMPS INSIDE	1	$\eta$ up(%)	12.0	CIBSE SHR NOM	1.50
TEST VOLTAGE(V)	220.7	$\eta$ down(%)	88.0	CIBSE SHR MAX	1.50



**C Range: 0 - 360DEG**  
**C Interval: 30.0DEG**  
**Test Speed: HIGH**  
**Temperature:25.3DEG**  
**Operators:DAMIN**  
**Test Date:2021-06-05**

**$\gamma$  Range: 0 - 180DEG**  
 **$\gamma$  Interval: 1.0DEG**  
**Test System:EVERFINE GO-2000A\_V1 SYSTEM V2.00.443**  
**Humidity:65.0%**  
**Test Distance:8.000m [K=0.7063]**  
**Remarks: 电源: LF-GIC020YS0500H**  
**灯板: DW290-4S7P-V1.2**  
**灯珠: 2835-LT3-H9G2F3R540,**  
**德辰, 1W, 4000K**

**ZONAL FLUX DIAGRAM**

**ZONAL FLUX DIAGRAM:**

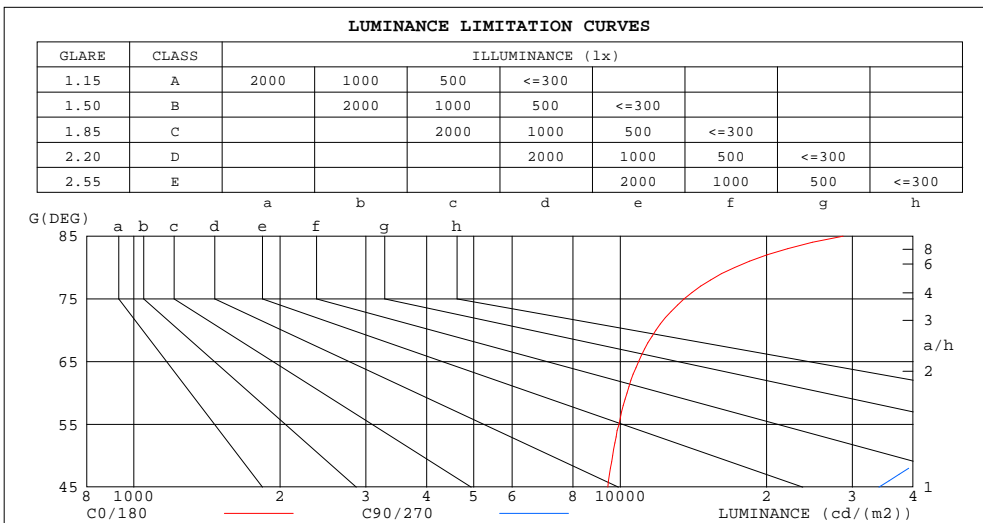
$\gamma$	C0	C45	C90	C135	C180	C225	C270	C315	$\gamma$	$\Phi$ zone	$\Phi$ total	%lum,lamp
10	333.7	380.5	405.1	376.0	327.5	288.8	275.2	292.8	0- 10	31.94	31.94	1.43,1.43
20	323.0	427.7	492.1	417.1	310.7	245.9	224.8	252.5	10- 20	95.13	127.1	5.7,5.7
30	303.6	476.0	615.6	456.1	286.2	204.0	179.9	212.7	20- 30	156.5	283.6	12.7,12.7
40	276.3	522.0	811.0	491.4	254.3	163.1	137.6	173.4	30- 40	216.2	499.7	22.4,22.4
50	241.8	556.1	1079	512.1	217.1	123.6	98.07	134.7	40- 50	273.7	773.4	34.7,34.7
60	201.5	553.9	1333	499.7	174.0	87.11	63.53	97.67	50- 60	320.7	1094	49.1,49.1
70	158.0	496.5	1394	439.9	132.1	58.69	38.39	67.54	60- 70	337.7	1432	64.2,64.2
80	116.3	388.4	1154	338.0	94.49	39.05	22.36	45.11	70- 80	304.6	1736	77.9,77.9
90	79.43	262.3	698.4	223.5	62.45	26.79	17.64	29.96	80- 90	224.8	1961	88,88
100	39.25	151.5	281.7	125.2	29.95	20.02	16.85	20.03	90-100	130.9	2092	93.8,93.8
110	25.15	73.41	118.2	58.91	20.57	16.13	16.43	14.00	100-110	64.52	2157	96.7,96.7
120	17.10	34.58	51.64	28.72	15.41	14.41	15.56	11.27	110-120	31.00	2188	98.1,98.1
130	13.12	19.62	23.26	15.95	12.58	14.06	14.79	10.71	120-130	16.99	2205	98.9,98.9
140	10.77	11.62	9.921	9.246	10.75	13.66	14.23	10.39	130-140	10.17	2215	99.3,99.3
150	10.02	8.332	6.612	7.403	10.45	13.19	13.76	10.64	140-150	6.598	2221	99.6,99.6
160	10.41	8.079	7.453	8.033	10.93	12.57	13.07	11.02	150-160	4.612	2226	99.8,99.8
170	11.04	9.406	9.057	9.376	11.30	11.78	12.03	10.97	160-170	2.921	2229	100,100
180	11.37	10.73	10.76	10.51	11.42	10.73	10.72	10.51	170-180	1.014	2230	100,100
DEG	LUMINOUS INTENSITY:cd									UNIT:lm		

**C Range: 0 - 360DEG**  
**C Interval: 30.0DEG**  
**Test Speed: HIGH**  
**Temperature:25.3DEG**  
**Operators:DAMIN**  
**Test Date:2021-06-05**

**$\gamma$  Range: 0 - 180DEG**  
 **$\gamma$  Interval: 1.0DEG**  
**Test System:EVERFINE GO-2000A\_V1 SYSTEM V2.00.443**  
**Humidity:65.0%**  
**Test Distance:8.000m [K=0.7063]**  
**Remarks: 电源: LF-GIC020YS0500H**  
**灯板: DW290-4S7P-V1.2**  
**灯珠: 2835-LT3-H9G2F3R540,**  
**德辰, 1W, 4000K**

**LUMINANCE LIMITATION CURVES**

Test:U:220.80V I:0.0950A P:20.200W PF:0.9620 Freq:50.00Hz Lamp Flux:2229.89x1 lm		
NAME: DW290 20W 000 4000K	TYPE: 圆柱形	
MFR.:	DIM.: $\phi$ 290*94 (mm)	
	SUR.: 260X150 (mm)	



LUMINANCE cd/(m2)		
G(DEG)	C0/180	C90/270
85	28738	273761
80	17177	170383
75	13537	129811
70	11844	104517
65	10905	84786
60	10331	68344
55	9940	54413
50	9647	43047
45	9427	34050

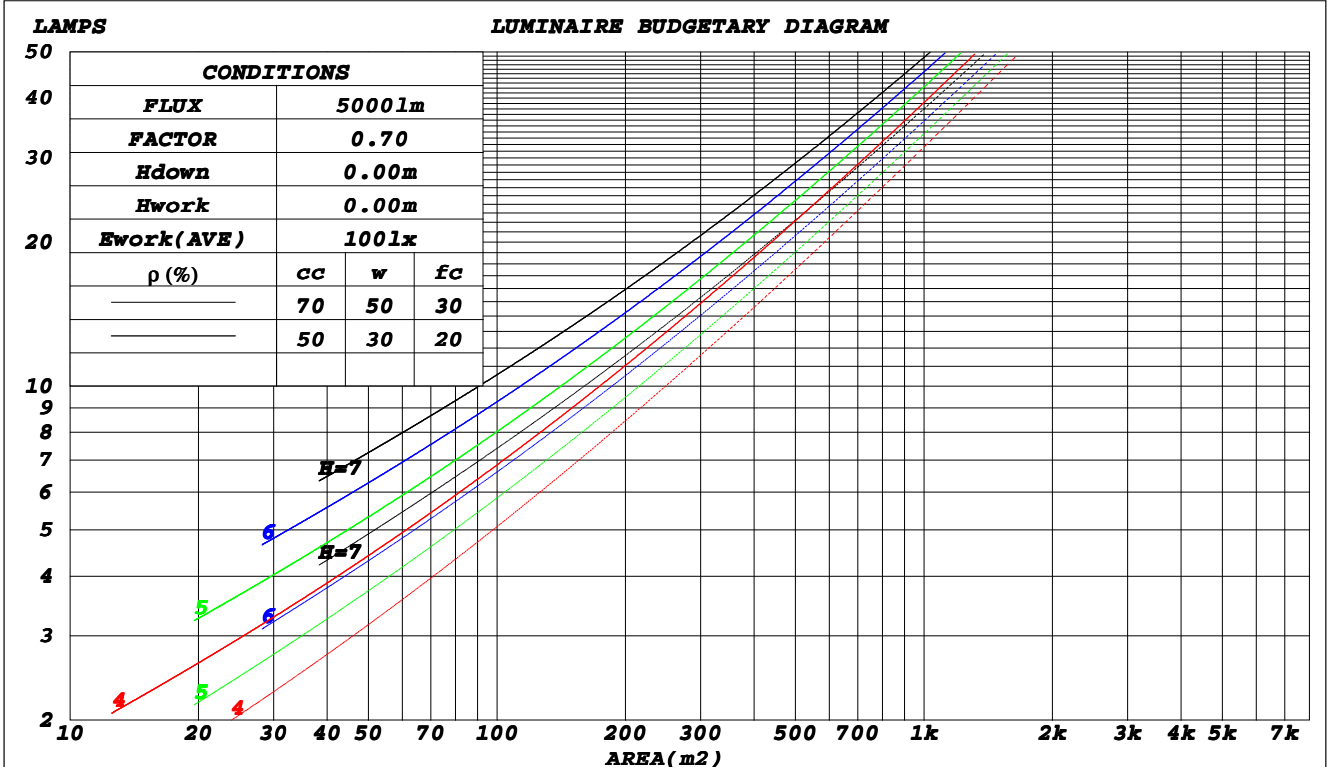
**C Range: 0 - 360DEG**  
**C Interval: 30.0DEG**  
**Test Speed: HIGH**  
**Temperature: 25.3DEG**  
**Operators: DAMIN**  
**Test Date: 2021-06-05**

**$\gamma$  Range: 0 - 180DEG**  
 **$\gamma$  Interval: 1.0DEG**  
**Test System: EVERFINE GO-2000A\_V1 SYSTEM V2.00.443**  
**Humidity: 65.0%**  
**Test Distance: 8.000m [K=0.7063]**  
**Remarks: 电源: LF-GIC020YS0500H**  
**灯板: DW290-4S7P-V1.2**  
**灯珠: 2835-LT3-H9G2F3R540,**  
**德辰, 1W, 4000K**

CU AND LUMINAIRE BUDGETARY ESTIMATE DIAGRAM

Test:U:220.80V I:0.0950A P:20.200W PF:0.9620 Freq:50.00Hz		
Lamp Flux:2229.89x1 lm		
NAME: DW290 20W 000 4000K	TYPE: 圆柱形	
MFR.:	DIM.: φ290*94 (mm)	
	SUR.: 260X150 (mm)	

ρcc	80%			70%			50%			30%			10%			0
ρw	50%	30%	10%	50%	30%	10%	50%	30%	10%	50%	30%	10%	50%	30%	10%	0
ρfc	20%			20%			20%			20%			20%			0
<b>RCR</b>	<b>RCR:Room Cavity Ratio</b>						<b>Coefficients of Utilization(CU)</b>									
0.0	1.16	1.16	1.16	1.12	1.12	1.12	1.04	1.04	1.04	.97	.97	.97	.91	.91	.91	.88
1.0	.94	.88	.82	.90	.85	.80	.84	.79	.75	.78	.74	.70	.72	.69	.66	.63
2.0	.79	.70	.62	.76	.67	.61	.70	.63	.57	.65	.59	.54	.60	.55	.51	.48
3.0	.67	.57	.49	.64	.55	.48	.60	.52	.45	.55	.48	.43	.51	.45	.41	.38
4.0	.58	.48	.40	.56	.46	.39	.52	.43	.37	.48	.41	.35	.44	.38	.33	.30
5.0	.51	.41	.33	.49	.40	.32	.46	.37	.31	.42	.35	.29	.39	.33	.28	.25
6.0	.45	.35	.28	.44	.34	.27	.41	.32	.26	.38	.30	.25	.35	.29	.24	.21
7.0	.41	.31	.24	.39	.30	.24	.37	.28	.23	.34	.27	.22	.32	.25	.21	.18
8.0	.37	.27	.21	.36	.27	.21	.33	.25	.20	.31	.24	.19	.29	.23	.18	.16
9.0	.34	.25	.19	.32	.24	.18	.30	.23	.17	.28	.22	.17	.26	.20	.16	.14
10.0	.31	.22	.17	.30	.22	.16	.28	.21	.16	.26	.20	.15	.24	.19	.14	.12



C Range: 0 - 360DEG  
 C Interval: 30.0DEG  
 Test Speed: HIGH  
 Temperature: 25.3DEG  
 Operators: DAMIN  
 Test Date: 2021-06-05

γ Range: 0 - 180DEG  
 γ Interval: 1.0DEG  
 Test System: EVERFINE GO-2000A\_V1 SYSTEM V2.00.443  
 Humidity: 65.0%  
 Test Distance: 8.000m [K=0.7063]  
 Remarks: 电源: LF-GIC020YS0500H  
 灯板: DW290-4S7P-V1.2  
 灯珠: 2835-LT3-H9G2F3R540,  
 德辰, 1W, 4000K

WEC AND CCEC

Test:U:220.80V I:0.0950A P:20.200W PF:0.9620 Freq:50.00Hz		
Lamp Flux:2229.89x1 lm		
NAME: DW290 20W 000 4000K	TYPE: 圆柱形	
MFR.:	DIM.: φ290*94 (mm)	
	SUR.: 260X150 (mm)	

ρ <sub>cc</sub>	80%			70%			50%			30%			10%			0
ρ <sub>w</sub>	50%	30%	10%	50%	30%	10%	50%	30%	10%	50%	30%	10%	50%	30%	10%	0
ρ <sub>fc</sub>	20%			20%			20%			20%			20%			0
<b>RCR</b>	<b>RCR:Room Cavity Ratio</b>						<b>Wall Exitance Coefficients(WEC)</b>									
0.0																
1.0	.444	.253	.080	.433	.247	.079	.413	.237	.076	.394	.227	.073	.376	.218	.070	
2.0	.377	.207	.063	.367	.202	.062	.348	.194	.060	.331	.186	.058	.315	.178	.056	
3.0	.330	.176	.053	.321	.172	.052	.304	.165	.050	.288	.158	.048	.274	.152	.047	
4.0	.293	.152	.045	.285	.149	.044	.270	.143	.043	.256	.137	.041	.242	.132	.040	
5.0	.264	.134	.039	.257	.132	.038	.243	.126	.037	.230	.121	.036	.218	.116	.035	
6.0	.240	.120	.034	.233	.118	.034	.221	.113	.033	.209	.109	.032	.198	.104	.031	
7.0	.220	.109	.031	.214	.106	.030	.202	.102	.029	.191	.098	.029	.181	.094	.028	
8.0	.202	.099	.028	.197	.097	.027	.187	.093	.027	.177	.090	.026	.168	.086	.025	
9.0	.188	.091	.025	.183	.089	.025	.173	.086	.024	.164	.082	.024	.156	.079	.023	
10.0	.175	.084	.023	.170	.082	.023	.162	.079	.022	.153	.076	.022	.146	.073	.021	

ρ <sub>cc</sub>	80%			70%			50%			30%			10%			0
ρ <sub>w</sub>	50%	30%	10%	50%	30%	10%	50%	30%	10%	50%	30%	10%	50%	30%	10%	0
ρ <sub>fc</sub>	20%			20%			20%			20%			20%			0
<b>RCR</b>	<b>RCR:Room Cavity Ratio</b>						<b>Ceiling Cavity Exitance Coefficients(CCEC)</b>									
0.0	.282	.282	.282	.241	.241	.241	.165	.165	.165	.095	.095	.095	.030	.030	.030	
1.0	.282	.248	.216	.241	.212	.186	.165	.146	.129	.095	.085	.075	.030	.027	.024	
2.0	.277	.225	.181	.237	.193	.156	.162	.134	.109	.094	.078	.064	.030	.025	.021	
3.0	.270	.208	.160	.231	.180	.138	.159	.125	.097	.092	.073	.057	.029	.024	.019	
4.0	.262	.196	.146	.225	.169	.127	.154	.118	.089	.089	.069	.053	.029	.023	.017	
5.0	.254	.186	.137	.218	.161	.119	.150	.113	.084	.087	.066	.050	.028	.022	.016	
6.0	.246	.178	.130	.211	.155	.113	.146	.108	.080	.085	.064	.048	.027	.021	.016	
7.0	.238	.172	.125	.205	.149	.109	.142	.104	.077	.082	.062	.046	.027	.020	.015	
8.0	.231	.166	.122	.199	.144	.106	.138	.101	.075	.080	.060	.045	.026	.020	.015	
9.0	.224	.161	.119	.193	.140	.104	.134	.098	.074	.078	.058	.044	.025	.019	.015	
10.0	.218	.157	.117	.188	.136	.102	.130	.096	.072	.076	.057	.043	.025	.019	.014	

C Range: 0 - 360DEG  
 C Interval: 30.0DEG  
 Test Speed: HIGH  
 Temperature:25.3DEG  
 Operators:DAMIN  
 Test Date:2021-06-05

γ Range: 0 - 180DEG  
 γ Interval: 1.0DEG  
 Test System:EVERFINE GO-2000A\_V1 SYSTEM V2.00.443  
 Humidity:65.0%  
 Test Distance:8.000m [K=0.7063]  
 Remarks: 电源: LF-GIC020YS0500H  
 灯板: DW290-4S7P-V1.2  
 灯珠: 2835-LT3-H9G2F3R540,  
 德辰, 1W, 4000K

**UGR(Unified Glare Rating) Table**

Test:U:220.80V I:0.0950A P:20.200W PF:0.9620 Freq:50.00Hz										
Lamp Flux:2229.89x1 lm										
NAME: DW290 20W 000 4000K					TYPE: 圆柱形					
MFR.:					DIM.: $\phi$ 290*94 (mm)					
					SUR.: 260X150 (mm)					
<b>ceiling/cavity</b>	<b>0.7</b>	<b>0.7</b>	<b>0.5</b>	<b>0.5</b>	<b>0.3</b>	<b>0.7</b>	<b>0.7</b>	<b>0.5</b>	<b>0.5</b>	<b>0.3</b>
<b>walls</b>	<b>0.5</b>	<b>0.3</b>	<b>0.5</b>	<b>0.3</b>	<b>0.3</b>	<b>0.5</b>	<b>0.3</b>	<b>0.5</b>	<b>0.3</b>	<b>0.3</b>
<b>working plane</b>	<b>0.2</b>	<b>0.2</b>	<b>0.2</b>	<b>0.2</b>	<b>0.2</b>	<b>0.2</b>	<b>0.2</b>	<b>0.2</b>	<b>0.2</b>	<b>0.2</b>
<b>Room dimensions</b>	<b>Viewed crosswise</b>					<b>Viewed endwise</b>				
<b>x = 2H y = 2H</b>	<b>19.6</b>	<b>21.2</b>	<b>20.1</b>	<b>21.7</b>	<b>22.3</b>	<b>28.1</b>	<b>29.7</b>	<b>28.7</b>	<b>30.3</b>	<b>30.9</b>
<b>3H</b>	<b>21.6</b>	<b>23.1</b>	<b>22.1</b>	<b>23.6</b>	<b>24.3</b>	<b>32.7</b>	<b>34.2</b>	<b>33.3</b>	<b>34.8</b>	<b>35.4</b>
<b>4H</b>	<b>22.6</b>	<b>24.0</b>	<b>23.1</b>	<b>24.6</b>	<b>25.2</b>	<b>34.9</b>	<b>36.3</b>	<b>35.4</b>	<b>36.8</b>	<b>37.5</b>
<b>6H</b>	<b>23.7</b>	<b>25.0</b>	<b>24.2</b>	<b>25.5</b>	<b>26.2</b>	<b>36.9</b>	<b>38.2</b>	<b>37.5</b>	<b>38.8</b>	<b>39.5</b>
<b>8H</b>	<b>24.2</b>	<b>25.5</b>	<b>24.8</b>	<b>26.1</b>	<b>26.8</b>	<b>37.9</b>	<b>39.2</b>	<b>38.5</b>	<b>39.8</b>	<b>40.4</b>
<b>12H</b>	<b>24.9</b>	<b>26.1</b>	<b>25.5</b>	<b>26.7</b>	<b>27.4</b>	<b>38.9</b>	<b>40.1</b>	<b>39.5</b>	<b>40.7</b>	<b>41.4</b>
<b>4H 2H</b>	<b>22.6</b>	<b>24.0</b>	<b>23.1</b>	<b>24.5</b>	<b>25.2</b>	<b>28.2</b>	<b>29.7</b>	<b>28.8</b>	<b>30.2</b>	<b>30.9</b>
<b>3H</b>	<b>24.6</b>	<b>25.9</b>	<b>25.2</b>	<b>26.5</b>	<b>27.1</b>	<b>33.0</b>	<b>34.2</b>	<b>33.5</b>	<b>34.8</b>	<b>35.5</b>
<b>4H</b>	<b>25.6</b>	<b>26.7</b>	<b>26.2</b>	<b>27.3</b>	<b>28.0</b>	<b>35.3</b>	<b>36.4</b>	<b>35.9</b>	<b>37.0</b>	<b>37.7</b>
<b>6H</b>	<b>26.6</b>	<b>27.6</b>	<b>27.2</b>	<b>28.2</b>	<b>28.9</b>	<b>37.7</b>	<b>38.7</b>	<b>38.3</b>	<b>39.3</b>	<b>40.0</b>
<b>8H</b>	<b>27.1</b>	<b>28.0</b>	<b>27.7</b>	<b>28.7</b>	<b>29.4</b>	<b>38.9</b>	<b>39.8</b>	<b>39.5</b>	<b>40.5</b>	<b>41.2</b>
<b>12H</b>	<b>27.7</b>	<b>28.6</b>	<b>28.3</b>	<b>29.2</b>	<b>29.9</b>	<b>40.1</b>	<b>41.0</b>	<b>40.7</b>	<b>41.7</b>	<b>42.4</b>
<b>8H 4H</b>	<b>27.9</b>	<b>28.9</b>	<b>28.6</b>	<b>29.6</b>	<b>30.3</b>	<b>35.4</b>	<b>36.3</b>	<b>36.0</b>	<b>37.0</b>	<b>37.7</b>
<b>6H</b>	<b>29.1</b>	<b>29.9</b>	<b>29.7</b>	<b>30.6</b>	<b>31.3</b>	<b>37.9</b>	<b>38.7</b>	<b>38.5</b>	<b>39.4</b>	<b>40.1</b>
<b>8H</b>	<b>29.6</b>	<b>30.4</b>	<b>30.3</b>	<b>31.1</b>	<b>31.8</b>	<b>39.2</b>	<b>40.0</b>	<b>39.9</b>	<b>40.7</b>	<b>41.4</b>
<b>12H</b>	<b>30.3</b>	<b>30.9</b>	<b>30.9</b>	<b>31.6</b>	<b>32.4</b>	<b>40.8</b>	<b>41.4</b>	<b>41.4</b>	<b>42.1</b>	<b>42.9</b>
<b>12H 4H</b>	<b>28.9</b>	<b>29.8</b>	<b>29.5</b>	<b>30.4</b>	<b>31.1</b>	<b>35.3</b>	<b>36.2</b>	<b>36.0</b>	<b>36.9</b>	<b>37.6</b>
<b>6H</b>	<b>30.1</b>	<b>30.9</b>	<b>30.8</b>	<b>31.5</b>	<b>32.3</b>	<b>37.9</b>	<b>38.6</b>	<b>38.6</b>	<b>39.3</b>	<b>40.1</b>
<b>8H</b>	<b>30.8</b>	<b>31.5</b>	<b>31.5</b>	<b>32.2</b>	<b>33.0</b>	<b>39.3</b>	<b>40.0</b>	<b>39.9</b>	<b>40.6</b>	<b>41.4</b>
<b>CIE190: 2010</b>										

CIE190: 2010  
Area: 0.039 m2

C Range: 0 - 360DEG  
C Interval: 30.0DEG  
Test Speed: HIGH  
Temperature: 25.3DEG  
Operators: DAMIN  
Test Date: 2021-06-05

$\gamma$  Range: 0 - 180DEG  
 $\gamma$  Interval: 1.0DEG  
Test System: EVERFINE GO-2000A\_V1 SYSTEM V2.00.443  
Humidity: 65.0%  
Test Distance: 8.000m [K=0.7063]  
Remarks: 电源: LF-GIC020YS0500H  
灯板: DW290-4S7P-V1.2  
灯珠: 2835-LT3-H9G2F3R540,  
德辰, 1W, 4000K

**UTILIZATION FACTORS TABLE**

Test:U:220.80V I:0.0950A P:20.200W PF:0.9620 Freq:50.00Hz Lamp Flux:2229.89x1 lm		
NAME: DW290 20W 000 4000K	TYPE: 圆柱形	
MFR.:	DIM.: $\phi$ 290*94 (mm)	
	SUR.: 260X150 (mm)	

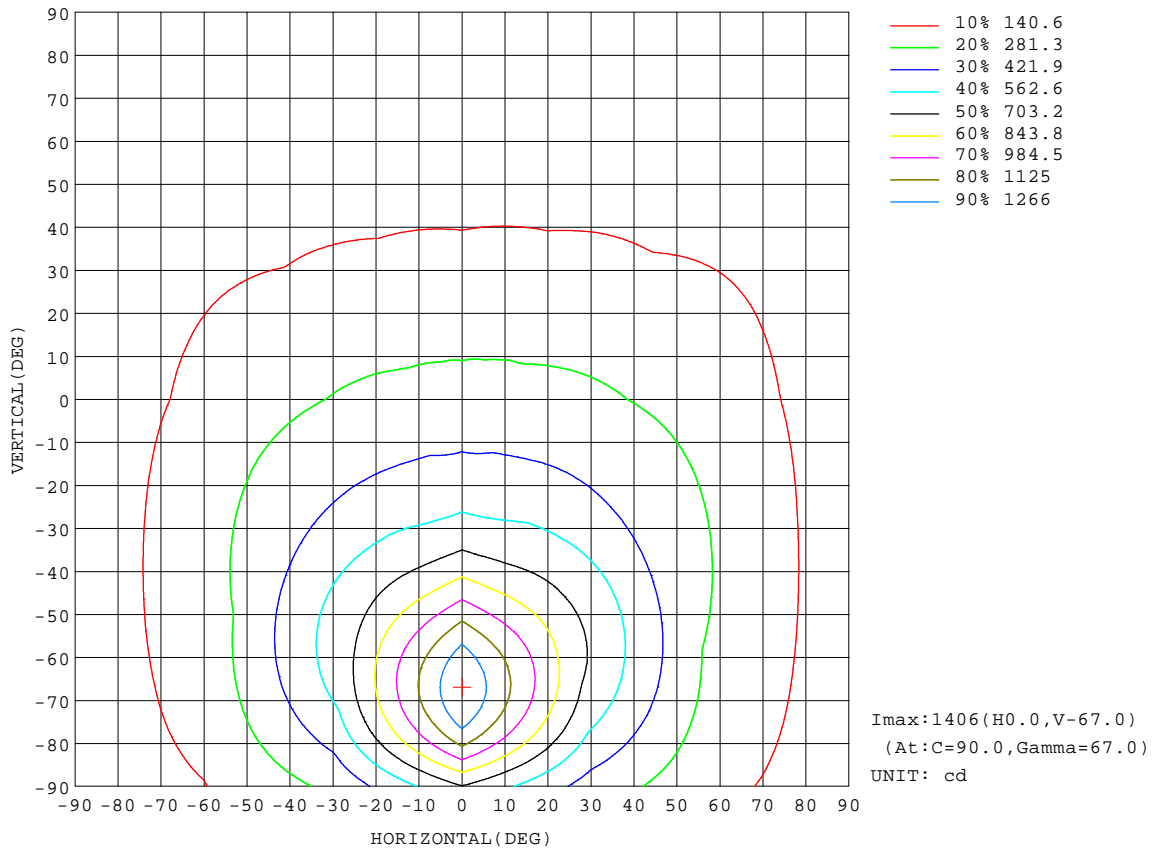
REFLECTANCE										
Ceiling	0.8	0.8	0.8	0.7	0.7	0.7	0.5	0.5	0.5	0
Walls	0.7	0.5	0.3	0.7	0.5	0.3	0.7	0.5	0.3	0
Working plane	0.2	0.2	0.2	0.2	0.2	0.2	0.2	0.2	0.2	0
ROOM INDEX	UTILIZATION FACTORS(PERCENT) $k(RI) \times RCR = 5$									
$k = 0.60$	45	31	24	44	31	23	42	30	23	16
0.80	54	40	31	52	39	31	50	38	30	22
1.00	61	47	38	60	46	38	56	48	37	28
1.25	68	55	45	66	53	45	62	51	43	34
1.50	74	60	51	71	59	50	67	56	48	38
2.00	82	69	60	79	68	59	74	64	57	46
2.50	87	75	66	84	73	65	78	69	62	50
3.00	91	80	72	87	78	70	81	74	67	55
4.00	96	87	80	92	84	78	86	79	74	61
5.00	99	91	85	96	89	83	89	83	78	65
ROOM INDEX	UF(total)									Direct
According to DIN EN 13032-2 2004			Suspended				SHRNOM = 1.25			

**C Range: 0 - 360DEG**  
**C Interval: 30.0DEG**  
**Test Speed: HIGH**  
**Temperature: 25.3DEG**  
**Operators: DAMIN**  
**Test Date: 2021-06-05**

**$\gamma$  Range: 0 - 180DEG**  
 **$\gamma$  Interval: 1.0DEG**  
**Test System: EVERFINE GO-2000A\_V1 SYSTEM V2.00.443**  
**Humidity: 65.0%**  
**Test Distance: 8.000m [K=0.7063]**  
**Remarks: 电源: LF-GIC020YS0500H**  
**灯板: DW290-4S7P-V1.2**  
**灯珠: 2835-LT3-H9G2F3R540,**  
**德辰, 1W, 4000K**

**ISOCANDELA DIAGRAM**

Test:U:220.80V I:0.0950A P:20.200W PF:0.9620 Freq:50.00Hz		
Lamp Flux:2229.89x1 lm		
NAME: DW290 20W 000 4000K	TYPE: 圆柱形	
MFR.:	DIM.: $\phi$ 290*94 (mm)	
	SUR.: 260X150 (mm)	



**C Range: 0 - 360DEG**  
**C Interval: 30.0DEG**  
**Test Speed: HIGH**  
**Temperature: 25.3DEG**  
**Operators: DAMIN**  
**Test Date: 2021-06-05**

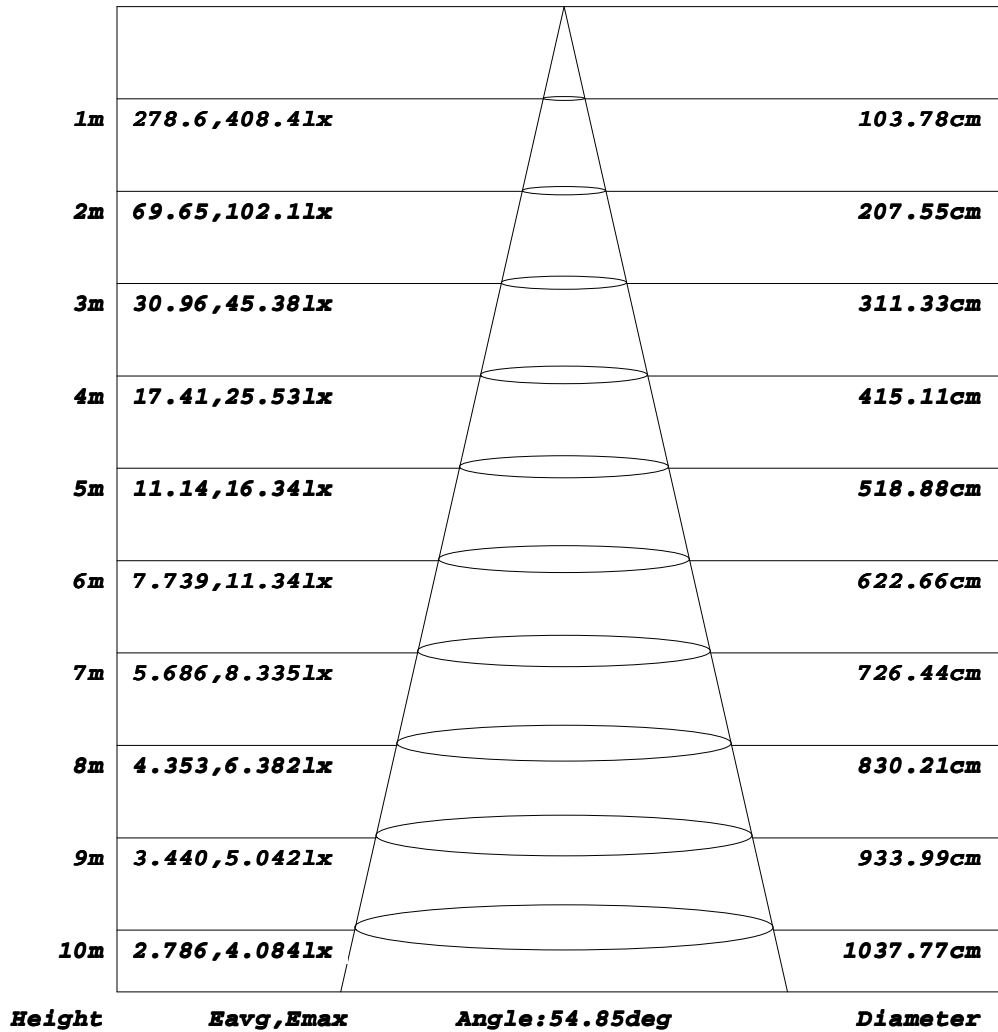
**$\gamma$  Range: 0 - 180DEG**  
 **$\gamma$  Interval: 1.0DEG**  
**Test System: EVERFINE GO-2000A\_V1 SYSTEM V2.00.443**  
**Humidity: 65.0%**  
**Test Distance: 8.000m [K=0.7063]**  
**Remarks: 电源: LF-GIC020YS0500H**  
**灯板: DW290-4S7P-V1.2**  
**灯珠: 2835-LT3-H9G2F3R540,**  
**德辰, 1W, 4000K**



**AAI Figure**

Test:U:220.80V I:0.0950A P:20.200W PF:0.9620 Freq:50.00Hz Lamp Flux:2229.89x1 lm		
NAME: DW290 20W 000 4000K	TYPE: 圆柱形	
MFR.:	DIM.: $\phi$ 290*94 (mm)	
	SUR.: 260X150 (mm)	

Flux out:247.5 lm



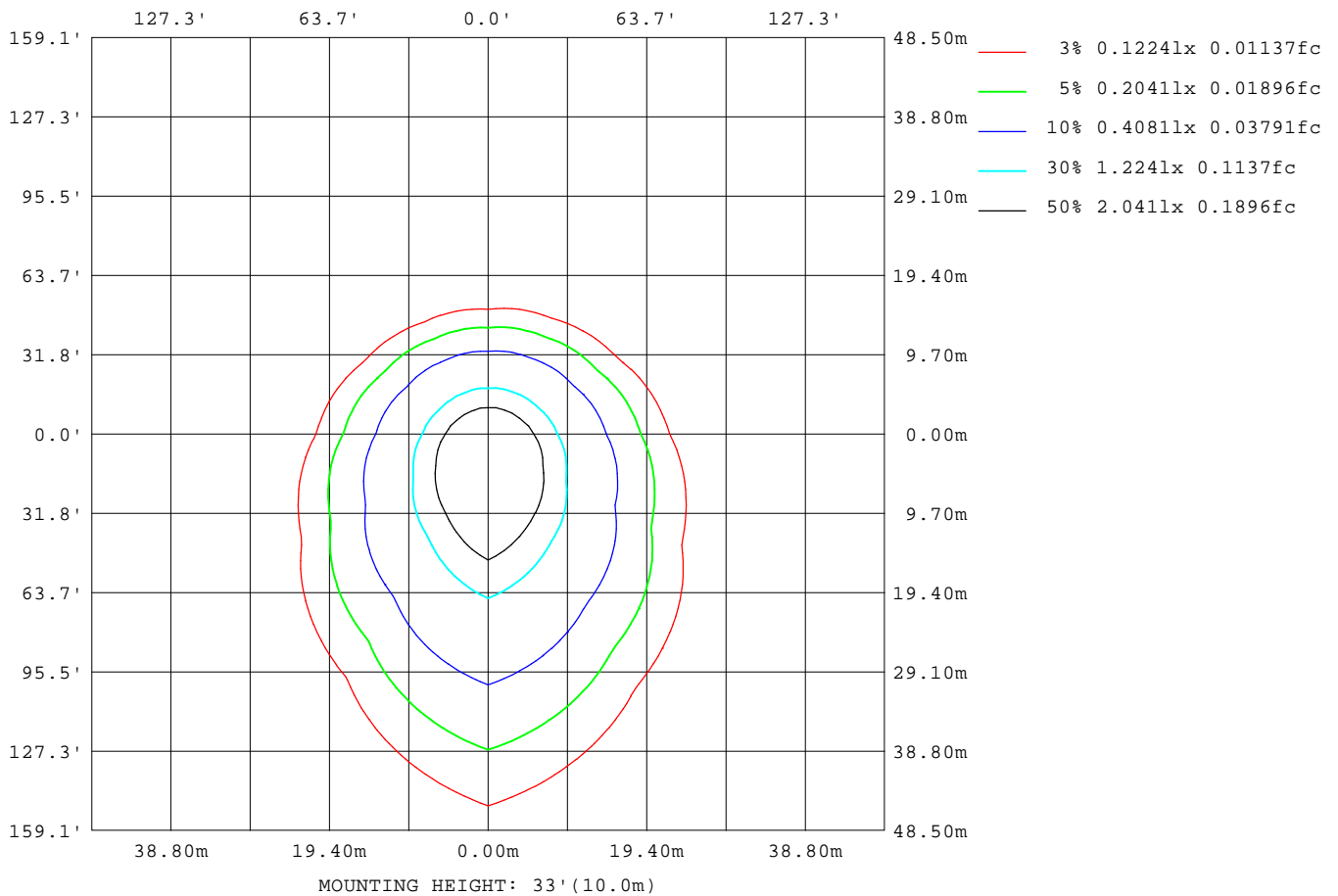
Note: The Curves indicate the illuminated area and the average illumination when the luminaire is at different distance.

C Range: 0 - 360DEG  
C Interval: 30.0DEG  
Test Speed: HIGH  
Temperature: 25.3DEG  
Operators: DAMIN  
Test Date: 2021-06-05

$\gamma$  Range: 0 - 180DEG  
 $\gamma$  Interval: 1.0DEG  
Test System: EVERFINE GO-2000A\_V1 SYSTEM V2.00.443  
Humidity: 65.0%  
Test Distance: 8.000m [K=0.7063]  
Remarks: 电源: LF-GIC020YS0500H  
灯板: DW290-4S7P-V1.2  
灯珠: 2835-LT3-H9G2F3R540,  
德辰, 1W, 4000K

**ISOLUX DIAGRAM**

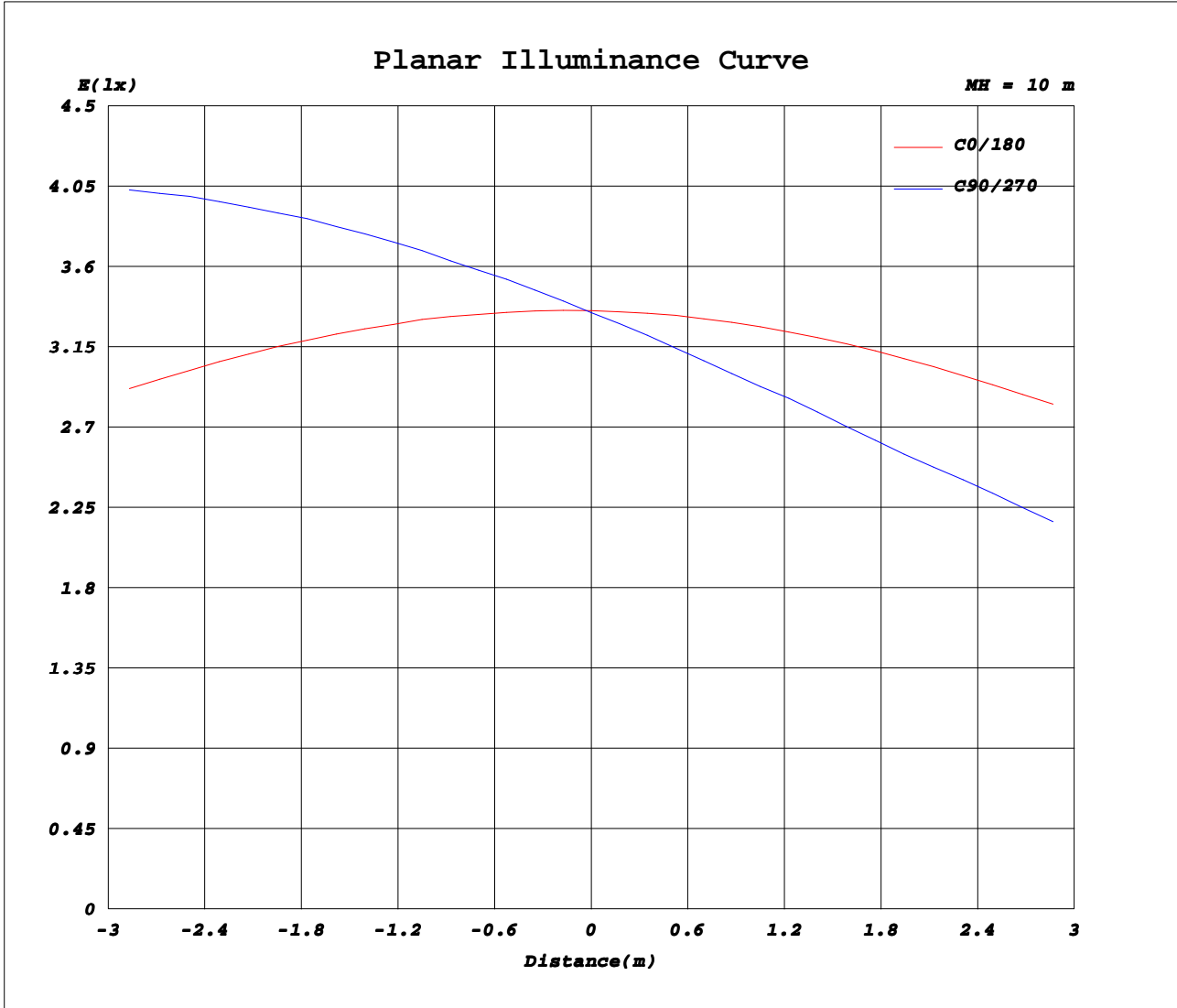
Test:U:220.80V I:0.0950A P:20.200W PF:0.9620 Freq:50.00Hz		
Lamp Flux:2229.89x1 lm		
NAME: DW290 20W 000 4000K	TYPE: 圆柱形	
MFR.:	DIM.: $\phi$ 290*94 (mm)	
	SUR.: 260X150 (mm)	



**C Range: 0 - 360DEG**  
**C Interval: 30.0DEG**  
**Test Speed: HIGH**  
**Temperature: 25.3DEG**  
**Operators: DAMIN**  
**Test Date: 2021-06-05**

**$\gamma$  Range: 0 - 180DEG**  
 **$\gamma$  Interval: 1.0DEG**  
**Test System: EVERFINE GO-2000A\_V1 SYSTEM V2.00.443**  
**Humidity: 65.0%**  
**Test Distance: 8.000m [K=0.7063]**  
**Remarks: 电源: LF-GIC020YS0500H**  
**灯板: DW290-4S7P-V1.2**  
**灯珠: 2835-LT3-H9G2F3R540,**  
**德辰, 1W, 4000K**

**Planar Illuminance Curve**



**C Range: 0 - 360DEG**  
**C Interval: 30.0DEG**  
**Test Speed: HIGH**  
**Temperature: 25.3DEG**  
**Operators: DAMIN**  
**Test Date: 2021-06-05**

**γ Range: 0 - 180DEG**  
**γ Interval: 1.0DEG**  
**Test System: EVERFINE GO-2000A\_V1 SYSTEM V2.00.443**  
**Humidity: 65.0%**  
**Test Distance: 8.000m [K=0.7063]**  
**Remarks: 电源: LF-GIC020YS0500H**  
**灯板: DW290-4S7P-V1.2**  
**灯珠: 2835-LT3-H9G2F3R540,**  
**德辰, 1W, 4000K**

**LUMINOUS DISTRIBUTION INTENSITY DATA**

Test:U:220.80V I:0.0950A P:20.200W PF:0.9620 Freq:50.00Hz Lamp Flux:2229.89x1 lm		
NAME: DW290 20W 000 4000K	TYPE: 圆柱形	
MFR.:	DIM.: φ290*94 (mm)	
	SUR.: 260X150 (mm)	

Table--1

UNIT: cd

C( DEG) γ (DEG)	0	30	60	90	120	150	180	210	240	270	300	330							
0	335	334	335	334	335	334	335	334	335	334	335	334							
5	336	351	363	367	362	348	333	316	307	303	309	318							
10	334	366	395	405	391	361	327	297	281	275	284	302							
15	330	381	427	445	422	371	320	279	256	250	260	285							
20	323	393	463	492	454	381	311	259	233	225	237	268							
25	314	403	500	547	487	387	299	240	210	202	215	250							
30	304	410	542	616	522	390	286	220	188	180	194	231							
35	291	413	586	703	560	390	271	200	167	158	174	213							
40	276	411	633	811	598	385	254	180	147	138	153	193							
45	260	406	679	939	634	376	236	159	126	117	134	174							
50	242	394	719	1079	662	362	217	140	107	98.1	115	155							
55	222	377	746	1217	679	344	196	120	88.4	79.9	95.7	135							
60	201	355	752	1333	678	321	174	102	71.8	63.5	78.6	117							
65	180	329	737	1397	657	295	153	86.5	57.3	49.8	63.5	99.8							
70	158	299	694	1394	614	266	132	72.2	45.2	38.4	50.8	84.3							
75	137	267	628	1310	552	234	113	59.7	36.1	28.8	40.0	70.4							
80	116	233	544	1154	475	201	94.5	48.9	29.2	22.4	32.1	58.2							
85	97.7	197	454	931	392	168	77.5	39.9	24.3	19.3	26.1	47.6							
90	79.4	163	361	698	311	136	62.4	32.5	21.1	17.6	21.8	38.1							
95	63.9	131	275	453	235	107	44.8	26.7	18.9	17.0	18.3	29.4							
100	39.3	102	201	282	169	81.5	29.9	22.4	17.7	16.8	16.2	23.9							
105	31.3	76.9	139	186	114	60.9	24.6	18.9	17.0	16.7	14.8	18.9							
110	25.1	56.2	90.6	118	73.3	44.5	20.6	15.7	16.6	16.4	13.9	14.1							
115	20.5	40.8	57.5	77.7	46.9	32.5	17.5	13.5	16.4	16.0	13.3	10.8							
120	17.1	29.9	39.2	51.6	33.2	24.3	15.4	12.7	16.1	15.6	12.9	9.67							
125	14.8	23.0	28.6	35.2	24.4	18.7	13.8	12.6	15.9	15.1	12.4	9.52							
130	13.1	18.1	21.1	23.3	17.3	14.6	12.6	12.5	15.6	14.8	12.1	9.37							
135	11.8	14.4	15.5	15.0	12.4	11.5	11.5	12.4	15.3	14.5	11.8	9.16							
140	10.8	11.7	11.6	9.92	9.20	9.30	10.7	12.4	14.9	14.2	11.7	9.05							
145	10.2	9.85	9.13	7.59	7.61	8.06	10.4	12.4	14.5	14.0	11.8	9.16							
150	10.0	8.86	7.80	6.61	7.11	7.70	10.4	12.4	14.0	13.8	11.9	9.41							
155	10.1	8.49	7.27	6.77	7.08	7.74	10.7	12.3	13.6	13.4	12.0	9.72							
160	10.4	8.67	7.49	7.45	7.72	8.35	10.9	12.1	13.0	13.1	12.0	10.1							
165	10.7	9.27	8.19	8.21	8.46	8.95	11.1	11.9	12.4	12.6	11.8	10.2							
170	11.0	9.87	8.94	9.06	9.26	9.49	11.3	11.7	11.9	12.0	11.6	10.4							
175	11.3	10.5	9.71	9.90	10.0	9.91	11.4	11.3	11.2	11.4	11.1	10.3							
180	11.4	11.0	10.5	10.8	10.7	10.3	11.4	11.0	10.5	10.7	10.7	10.3							

**C Range: 0 - 360DEG**  
**C Interval: 30.0DEG**  
**Test Speed: HIGH**  
**Temperature: 25.3DEG**  
**Operators: DAMIN**  
**Test Date: 2021-06-05**

**γ Range: 0 - 180DEG**  
**γ Interval: 1.0DEG**  
**Test System: EVERFINE GO-2000A\_V1 SYSTEM V2.00.443**  
**Humidity: 65.0%**  
**Test Distance: 8.000m [K=0.7063]**  
**Remarks: 电源: LF-GIC020YS0500H**  
**灯板: DW290-4S7P-V1.2**  
**灯珠: 2835-LT3-H9G2F3R540,**  
**德辰, 1W, 4000K**